

SMC PROGRAMMABLE LOGIC CONTROLLER

FEATURES:

- mini DCS
- CP Dev
- ST IEC 61131-3
- RTC
- MOD BUS



- Creation of control algorithms in ST language acc. to the IEC 61131-3 standard (CPDev package).
- On-line and off-line simulations of created algorithms (CPDev packages).
- Communication in a distributed system with I/O modules of SM series, other control and measuring devices through the RS-485 interface with Modbus protocol (ASCII/RTU).
- Rich libraries of functional blocs with the possibility to create a user's library.
- Steering with RTC usage.

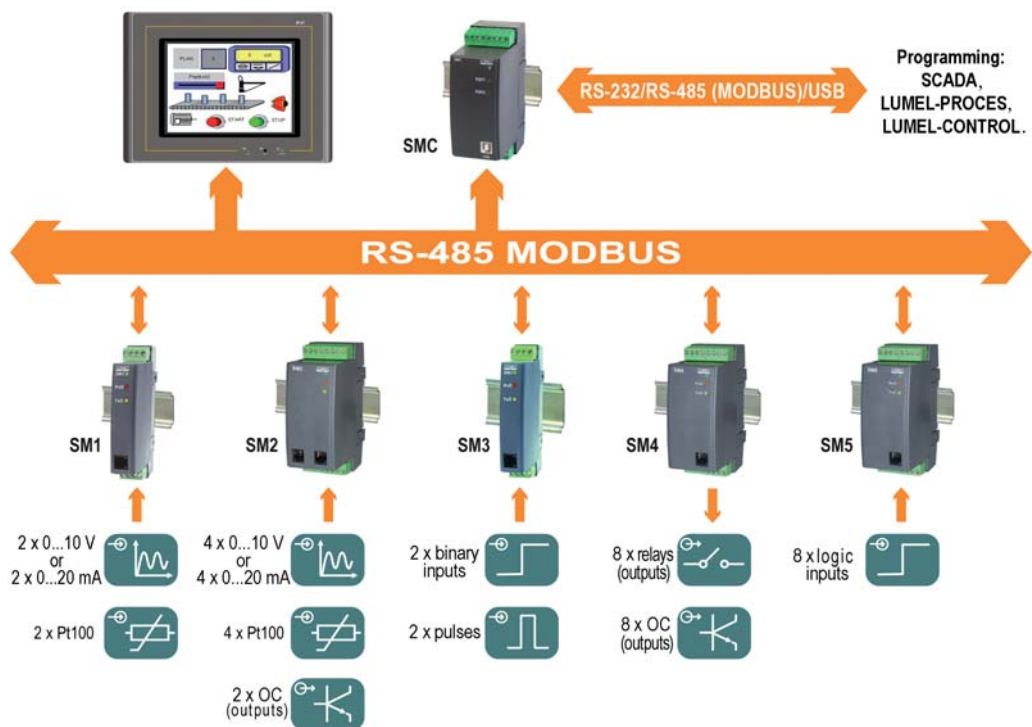
INPUTS/OUTPUTS:

- RS 485
- RS 232
- USB

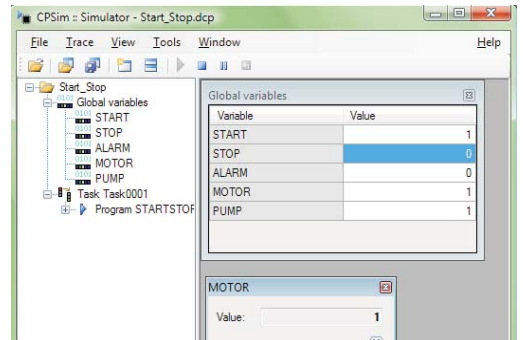
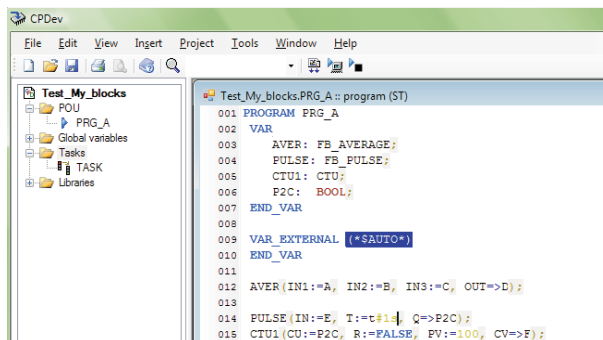
GALVANIC ISOLATION:



EXAMPLE OF APPLICATION



CPDEV PROGRAMMING



The engineer's package for programming the SMC controller is composed of three modules:

- editor of CPDev projects,
- configurator of communication with I/O - CPCon modules,
- simulator of CPSim projects.

A	No	Slave no.	Function	Remote addr	Data number	Local addr	Conversion	Priority	Timeout [ms]	Correctness	Com. time	On/Off
1	1	1	FC3-read reg	4003	3	0	16>8 bit	normal	500			
2	2	2	FC16-write reg	4205	2	8	8>16 bit	normal	500			

Export department:
 English: +48 68 32 95 302 / 321 / 276 / 386 / 233
 German: +48 68 32 95 305
 French: +48 68 32 95 304
 Russian: +48 68 32 95 321
 Fax: +48 68 32 54 091
 e-mail: export@lumel.com.pl
 LUMEL S.A.
 ul. Sulechowska 1
 65-022 Zielona Góra
 POLAND
WWW.LUMEL.COM.PL

COMMUNICATION INTERFACE

Baud rate	1200, 2400, 4800, 9600, 19200, 38400, 57600, 115200 bit/s	
Information unit	1 start bit, 7 or 8 data bits, 1 bit odd/even parity bit, 1 or 2 stop bit	
Interface	Port 1: RS-485, RS-232, USB 1.1, communication with the PC computer and HMI panels	Port 2: 2 × RS-485, communication with I/O modules
Transmission protocol	MODBUS ASCII/RTU	

EXTERNAL FEATURES

Weight	< 0.25 kg	
Overall dimensions	45 × 120 × 100 mm	
Protection grade (acc. to EN 60529)	from housing side: IP65	from terminals: IP20
Fixing	on a 35 mm rail	

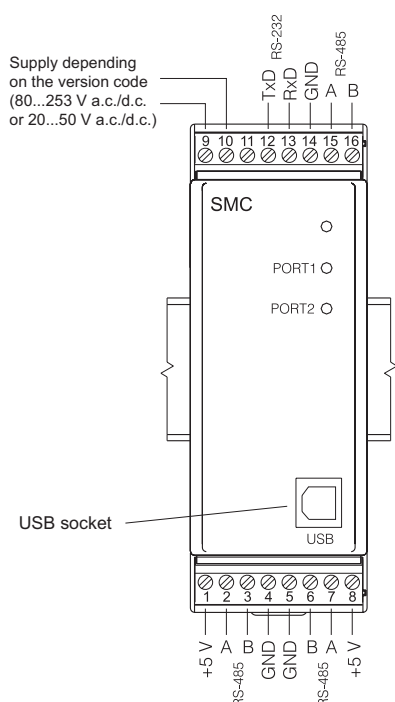
RATED OPERATING CONDITIONS

Supply voltage	20...24...40 V a.c./d.c. or 85...230...253 V a.c./d.c. 40...50/60...440 Hz	power consumption: ≤ 4 VA
Temperature	ambient: 0...23...55°C	storage: -20...70°C
Relative humidity	≤ 95%	condensation inadmissible
Operating position	any	
External magnetic field	< 400 A/m	

SAFETY AND COMPATIBILITY REQUIREMENTS

Electromagnetic compatibility	noise immunity	acc. to EN 61000-6-2
	noise emissions	acc. to EN 61000-6-4
Safety requirements	installation category III	acc. to EN 61010-1
	pollution grade: 2	
Maximal phase-to-earth operating voltage	for the supply circuit: 300 V	
	for other circuits: 50 V	

CONNECTION DIAGRAM



ORDERING

ORDERING CODES:

	SMC	X	XX	X	X
Supply:					
85...253 V a.c./d.c.		1			
20...40 V a.c./d.c.		2			
Version:					
standard			00		
non-standard settings			NS		
custom-made*			XX		
Language:					
polish				P	
english				E	
other*				X	
Acceptance tests:					
without extra requirements					0
with an extra quality inspection certificate					1
acc. to customer's request*					X

* - after agreeing with the manufacturer

Order example:

The **SMC - 1 00 E 1** code means:
SMC - programmable logic controller
1 - supply: 85...230.253 V a.c./d.c.
00 - standard version
E - English language
1 - with a quality control atest.

SEE ALSO:



I/O modules of SM series
SM1, SM2, SM3, SM4, SM5.



Operator's panel
MT057 and MT058.



SCADA systems
Lumel-Proces
Lumel-Control.



For more information about LUMEL's products please visit our website: www.lumel.com.pl

Export department:
English: +48 68 32 95 302 / 321 / 276 / 386 / 233
German: +48 68 32 95 305
French: +48 68 32 95 304
Russian: +48 68 32 95 321
Fax: +48 68 32 54 091
e-mail: export@lumel.com.pl

LUMEL S.A.
 ul. Sulechowska 1
 65-022 Zielona Góra
 POLAND
WWW.LUMEL.COM.PL