

SM8 GSM/GPRS TRANSMISSION MODULE

FEATURES:

GSM / GPRS

TCP/IP Protocol

INPUTS:

GSM

OUTPUTS:

RS 232

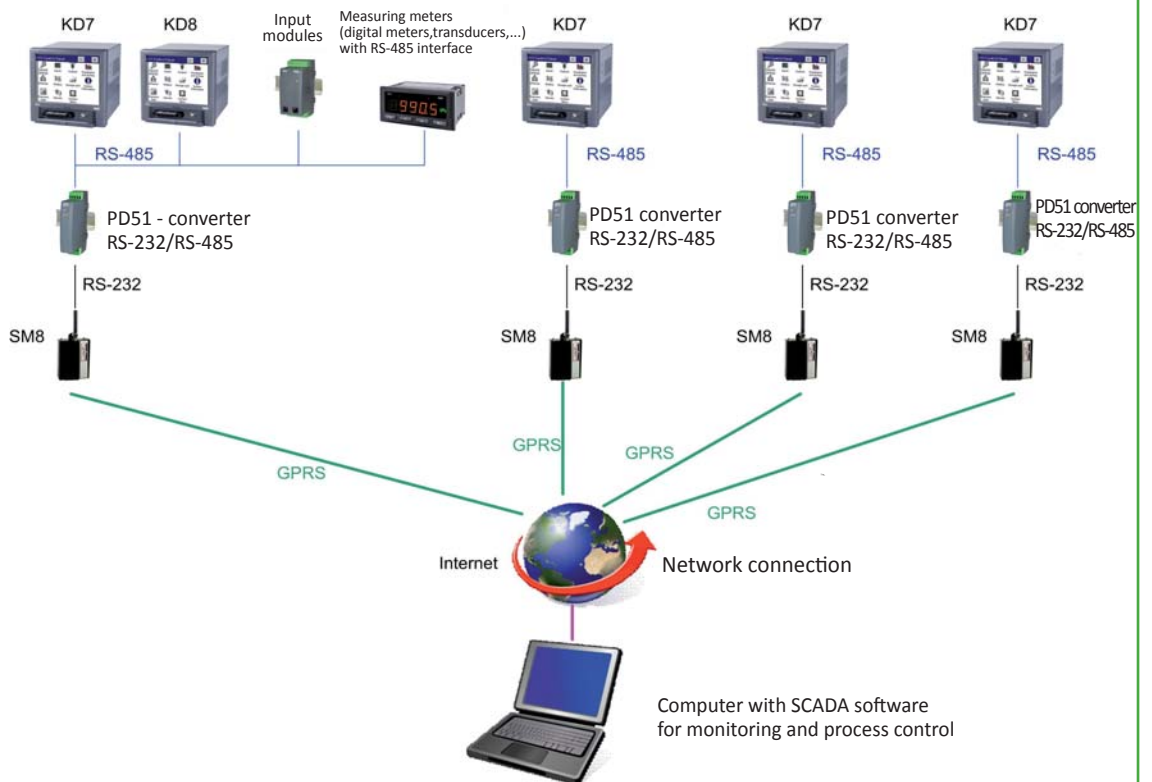
GALVANIC ISOLATION:

RS 232



- Destined for GSM/GPRS radio communication with a device equipped with RS-232 serial interface
 - Data transmission in one of three available GSM bands (900/1800/1900 MHz) is carried out in the GPRS package technology
 - Communication connection between the computer software (e.g. Lumel Proce) and the SM8 module is realized by the use of TCP/IP protocol
- In order to obtain a correct connection, a SIM card with the option of public and static IP address is applied in the module, however the access to the internet network is assigned to the computer.

EXAMPLE OF APPLICATION



DIGITAL INTERFACES

Port	Properties	
Serial interface RS-232	Data format:	8N1
	Baud rate:	1200, 2400, 4800, 9600, 14400, 19200, 28800, 38400, 57600, 115200 bit/s
GSM interface	Band:	900/1800/1900 MHz
	Output power:	2 W (900 MHz) 1 W (1800/1900 MHz)
	GPRS transmission rate:	≤ 56000 bit/s
	Antenna output:	50 Ω SMA

EXTERNAL FEATURES

Overall dimensions	107 x 64 x 33 mm	
Weight	< 0.2 kg	with packing
Protection grade	housing: IP30	from terminal side: IP20
Housing	to fix on a plane surface	

Export department:
English: +48 68 32 95 302 / 321 / 276 / 386 / 233
German: +48 68 32 95 305
French: +48 68 32 95 304
Russian: +48 68 32 95 321
Fax: +48 68 32 54 091
e-mail: export@lumel.com.pl

LUMEL S.A.
 ul. Sulechowska 1
 65-022 Zielona Góra
 POLAND

WWW.LUMEL.COM.PL

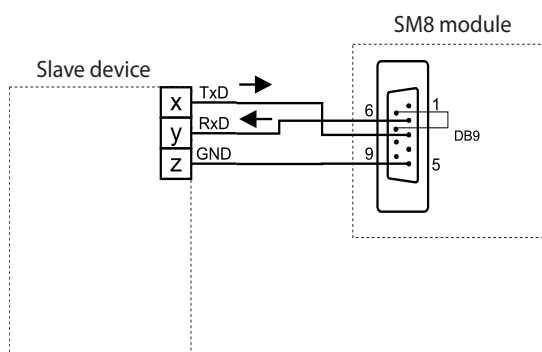
RATED OPERATING CONDITIONS

Supply voltage	12...24 V a.c.	Input power: ≤ 14.4 VA Current at 12 V d.c. supply voltage: - peak current during the transmission: ≤1.2 A - mean current during the transmission: 110 mA - during rest: 8 mA
Temperature	ambient: -20...23...70°C	Storage: -30...85 °C
Relative humidity	< 95%	Inadmissible condensation
Operating position	any	
Time to obtain the readiness to work since the supply switching on:	> 20 sec	

SAFETY AND COMPATIBILITY REQUIREMENTS

Electromagnetic compatibility	noise immunity	acc.to EN 61000-6-2
	fastness against supply decays	acc.to EN 61000-6-2
	emission of radio electric perturbations	acc.to EN 61000-6-4
Pollution level	2	acc.to EN 61010-6-1
Installation category	III	
Max.phase-to-earth operating voltage	for supply circuit: 50 V for other circuits: 50 V	

CONNECTION DIAGRAMS



Connection way of the RS - 232 interface

ORDERING

GSM/GPRS transmission module - SM8	XX	X
Version:		
standard	00	
custom-made *	XX	
Acceptance tests:		
without additional quality inspection requirements		8
with an extra quality inspection certificate		7
acc.to customers request *		X

* after agreeing with the manufacturer

Ordering example:

The code **SM8 - 00 7** means:

SM8 - GSM/GPRS transmission module of SM8 type

00 - standard version

7 - with an extra quality inspection certificate

SEE ALSO:



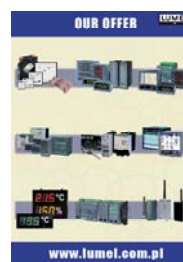
Input and output modules of SM series



PD8 - converter of RS-485/Ethernet interfaces



LUMEL - proces software



For more information about LUMEL's products please visit our website:
www.lumel.com.pl

Export department:
English: +48 68 32 95 302 / 321 / 276 / 386 / 233
German: +48 68 32 95 305
French: +48 68 32 95 304
Russian: +48 68 32 95 321
Fax: +48 68 32 54 091
e-mail: export@lumel.com.pl
 LUMEL S.A.
 ul. Sulechowska 1
 65-022 Zielona Góra
 POLAND
WWW.LUMEL.COM.PL